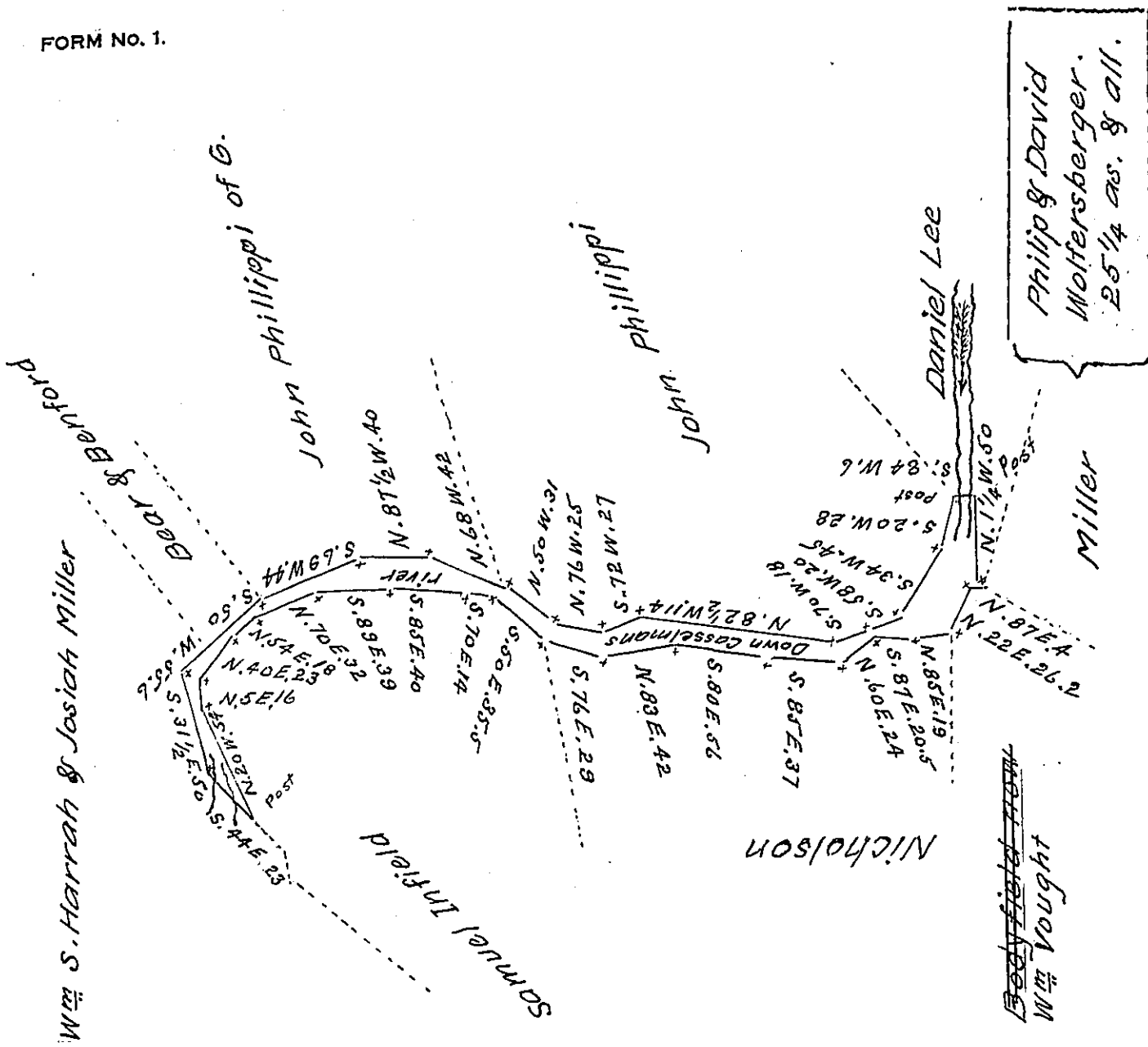


FORM NO. 1.



Situate on Casselman's river including the same in Milford Township Somerset County Containing 25 1/4 acres & allowance Surveyed the 15<sup>th</sup> day of October 1856. In pursuance of a warrent dated the 15<sup>th</sup> day of August 1856, granted to the said Philip & David Wolfersberger for 35<sup>acs</sup>.

To J. Porter Brawley Esq.  
Surveyor General,

p<sup>r</sup> Martin Meyer Dep. Sur.

IN TESTIMONY that the above is a copy of the original remaining on file in the Department of Internal Affairs of Pennsylvania, made conformably to an Act of Assembly approved the 16th day of February 1833, I have hereunto set my hand and caused the Seal of said Department to be affixed at Harrisburg, this Seventh day of October 1907.

*Henry Howell*  
Secretary of Internal Affairs.